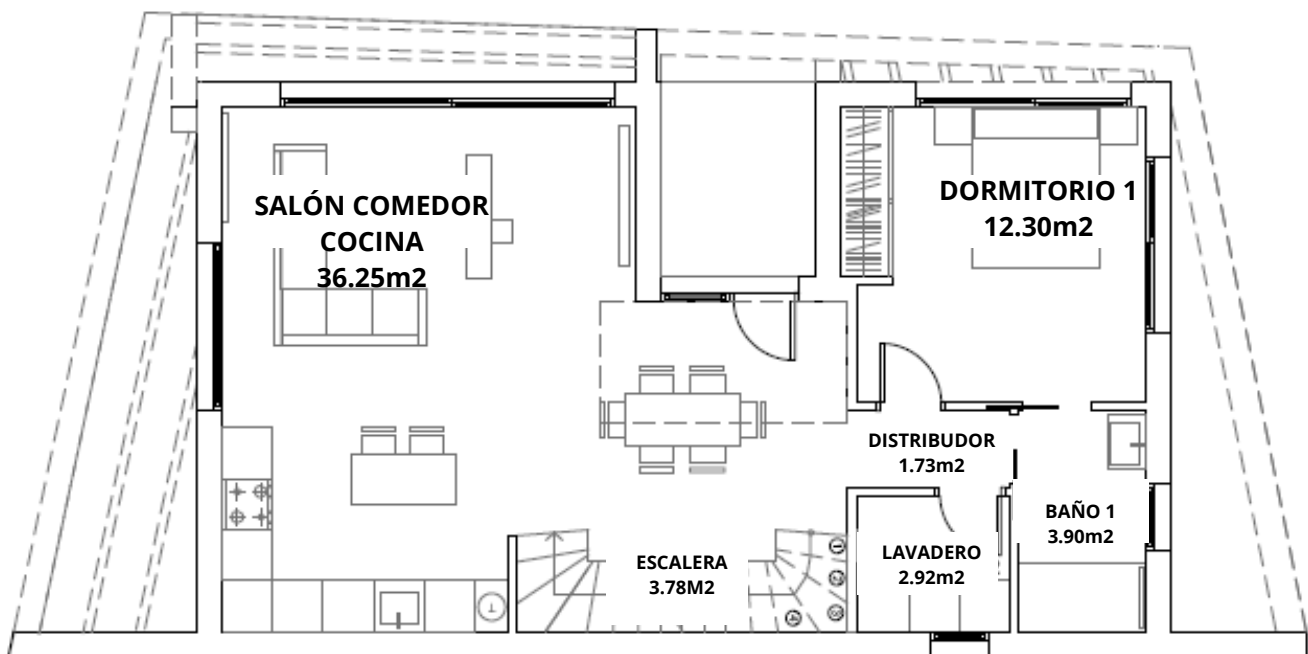
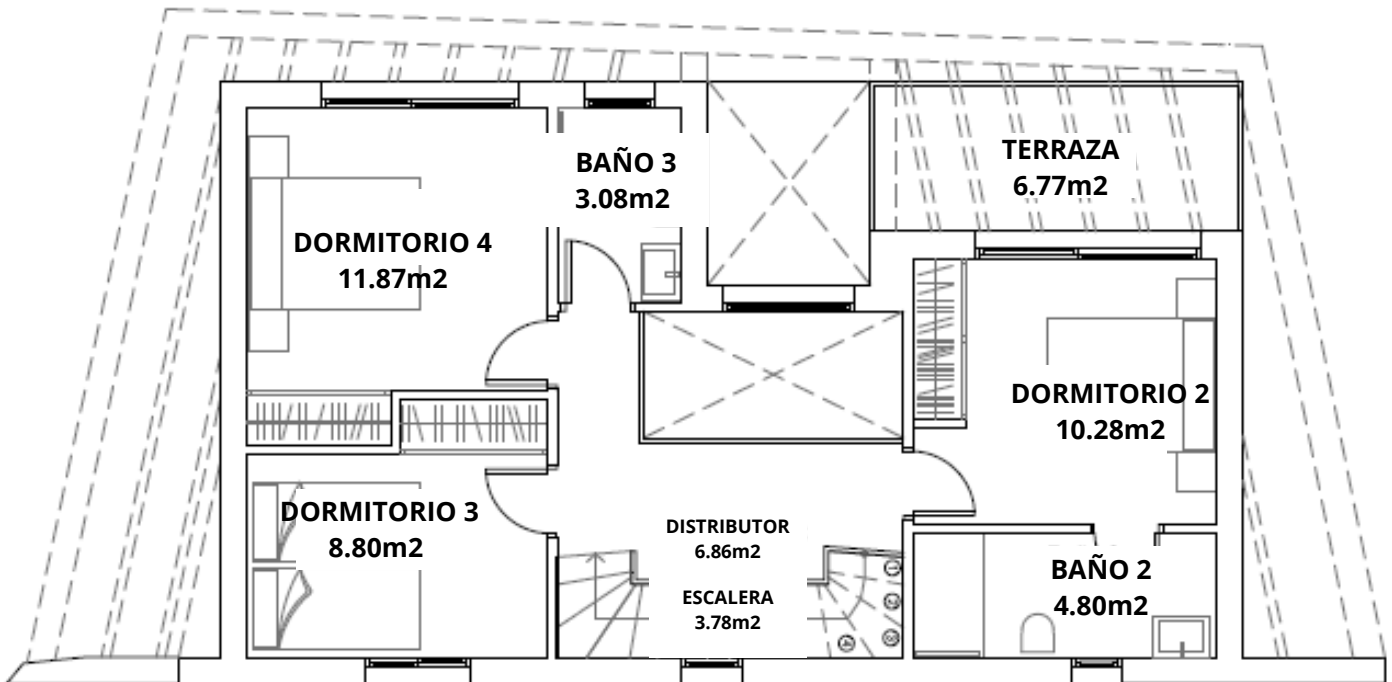


PLANTA BAJA:



SALON COMEDOR Y COCINA	36.25m ²
DORMITORIO 1	12.30m ²
ESCALERA	3.78m ²
DISTRIBUTOR	1.73m ²
BAÑO 1	3.90m ²
LAVADERO	2.92m ²

PLANTA PRIMERA:



DORMITORIO 2	10.28m ²
DORMITORIO 3	8.80m ²
DORMITORIO 4	11.87m ²
BAÑO 2	4.80m ²
BAÑO 3	3.08m ²
DISTRIBUTOR	6.86m ²
TERRAZA	6.77m ²

TOTAL ÚTIL 113.34m²

PLANTA BAJA	74.56m ²
PLANTA PRIMERA	60.42m ²
ESCALERA	3.78m ²
TERRAZA CUBIERTA	9.54m ²
PORCHES	20.98m ²

CONSTRUIDA TOTAL 165.50m²